

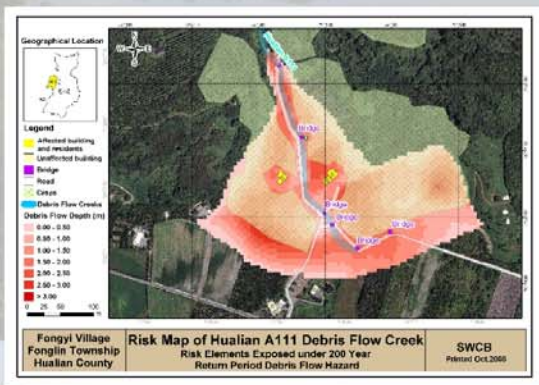
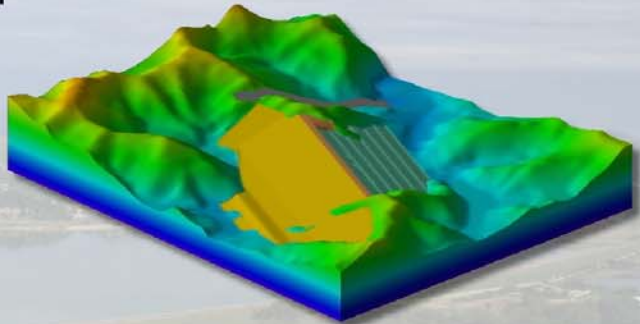


SINOTECH Engineering Consultants, Inc.

Geotechnical Engineering Research Center

* RESEARCH AND DEVELOPMENT

- Risk assessment for landslides and debris flows
- Rock tunnel engineering
- Reservoir and dam engineering
- Advanced numerical analysis for geotechnical engineering
- Safety inspection techniques for bridges and tunnels
- Web-based geotechnical analysis platforms
- Hydrogeological investigation, analysis and assessment
- Probabilistic analysis of Seismic hazard



* TECHNICAL SERVICE

- Investigation and evaluation of landslides and debris flows
- Monitoring, analysis and safety assessment of embankment dams
- Monitoring, back analysis and safety assessment of underground excavations
- Hydrogeological investigation, analysis and assessment

* GEOMECHANICS TESTING

- Rock mass characterization and testing
- Lab. test for soil and rock specimen
- Geophysical surveys
- Hydro-geological test and measurement
- Field test and instrumentation

